

iSeries (AS/400) Configuration Instructions for Tray Mappings for IPDSXpress

American PrintWare, Inc.
27126B Paseo Espada, Ste. 724
San Juan Capistrano, CA 92675
Tel 949-488-2222
Fax 949-488-2225
E-mail sales@apwi.com
Web www.apwi.com

Host Configuration to support Multiple PaperSizes

The first thing you need to verify is that the host is configured to support requesting multiple input trays. On an IBM System i - iSeries - AS/400 type of host, this option is controlled by the Form Feed parameter in the device description.

Fig. 1

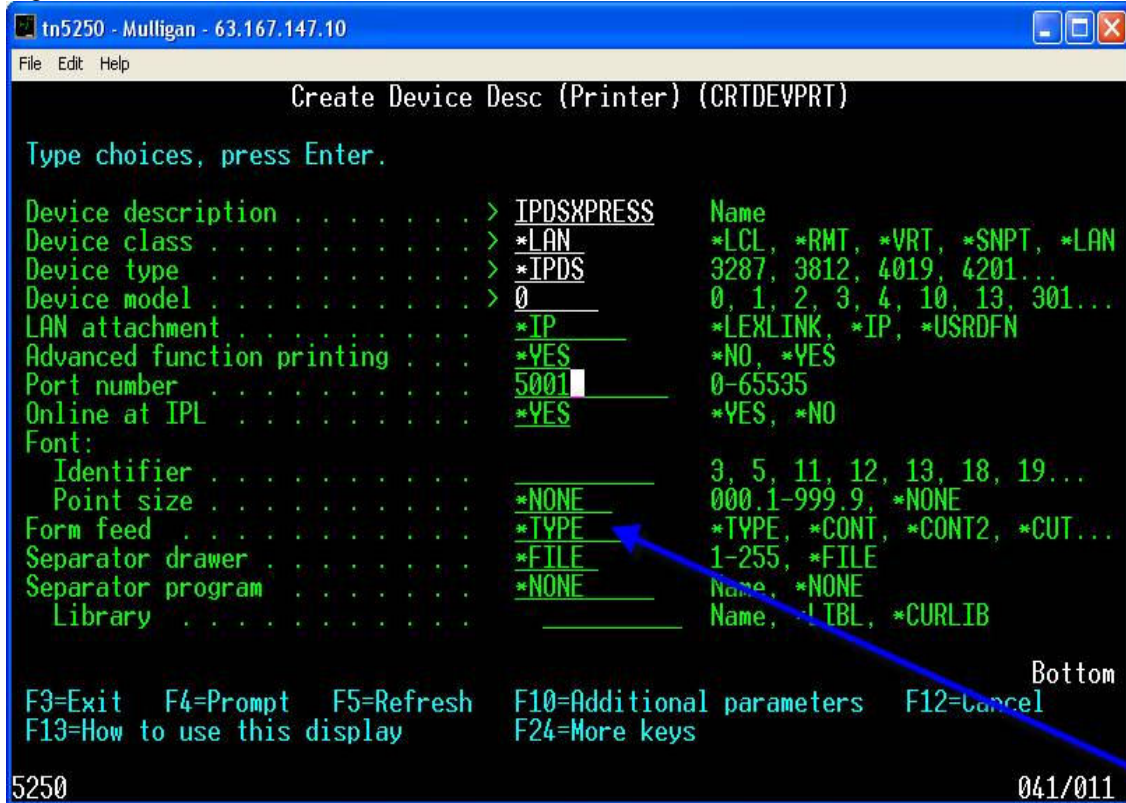


Fig 1: Initially the value is set to *TYPE. This prompts the system to change the value once the first connection to the defined printer has occurred.

IPDSXpress printer choices for Multiple PaperSizes

Fig. 2

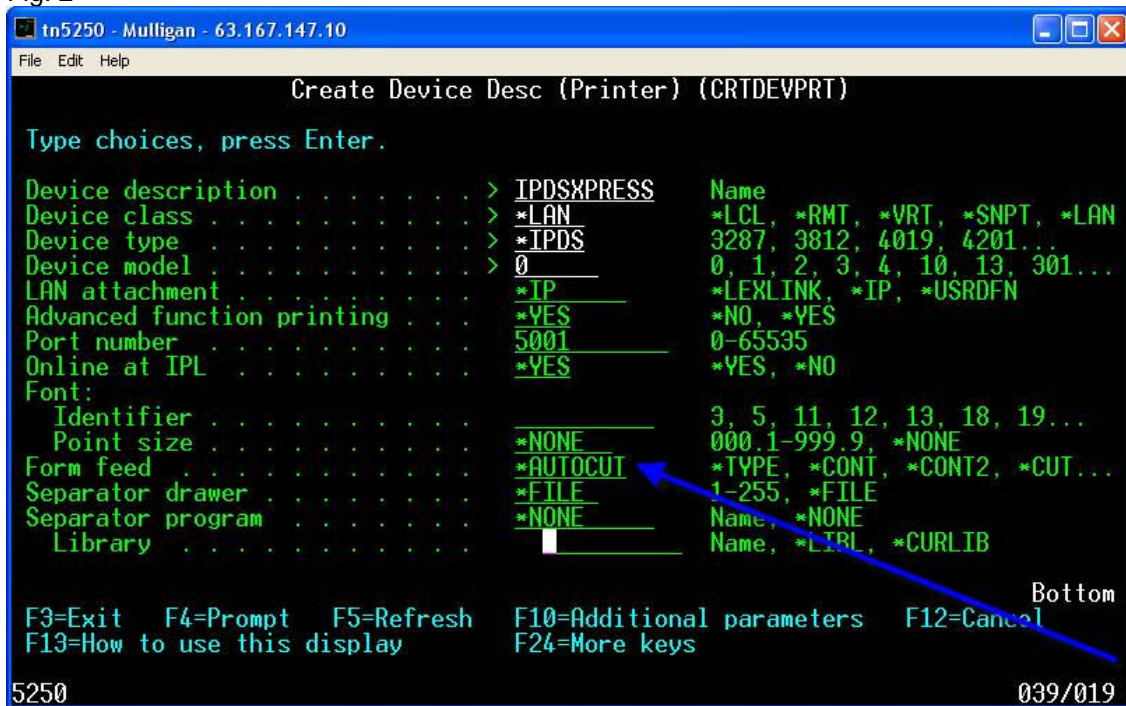


Fig 2: For IPDSXpress printer choices, you will always want the system to select *AUTOCUT as the Form Feed parameter entry. Sometimes the system default of *CONT (Continuous Forms printer) will accidentally be selected by the host and this prevents selecting any input tray but the system default (Source Drawer 00001).

IPDSXpress provides a web browser based link to the input tray selections being advertised by the selected Windows printer driver. It allows you to define which paper types and sizes you want to support with IPDSXpress and assigns an IPDS Tray# to each selection.

IPDSXpress GUI Setting

Fig. 3

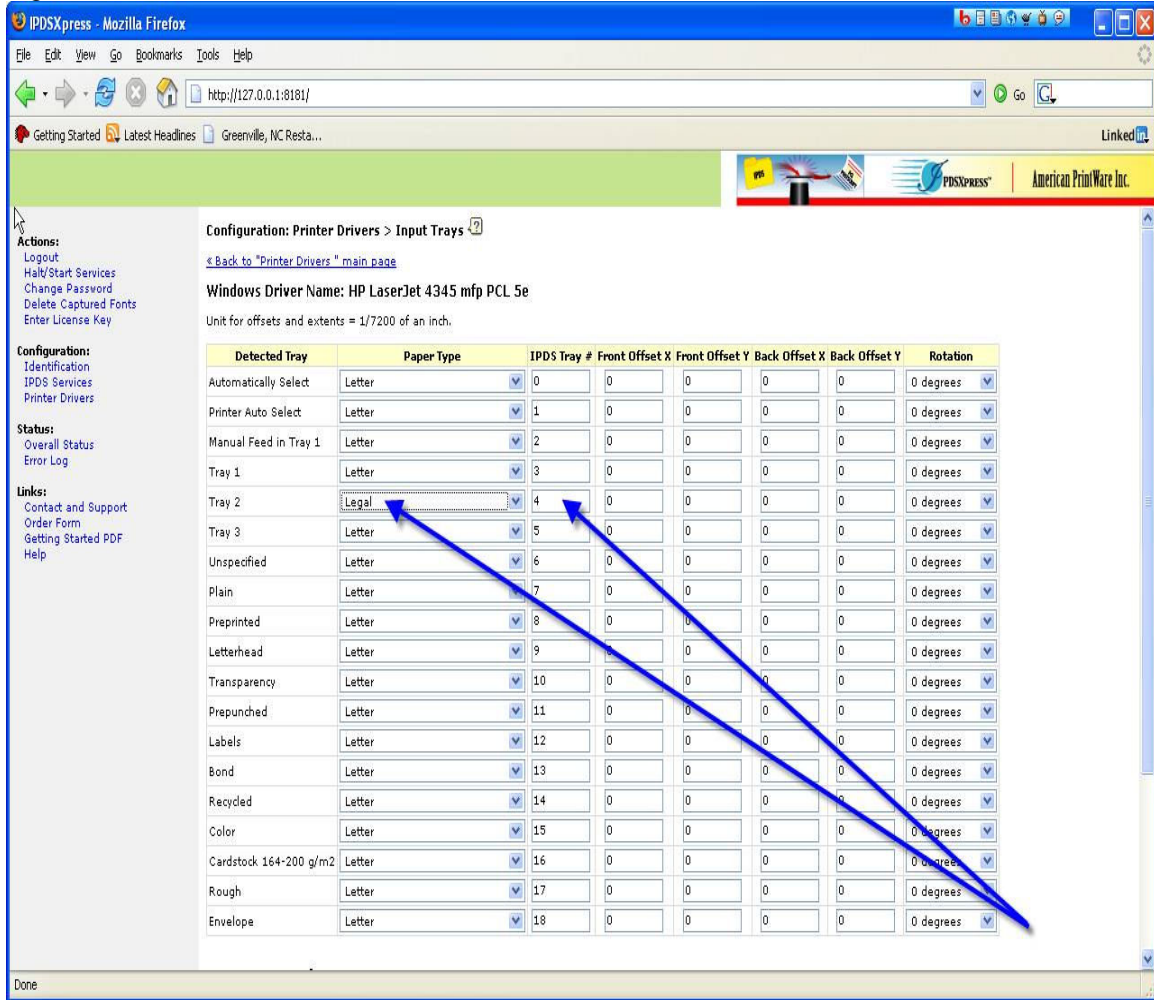


Fig 3: In this example, the Windows printer driver choice called Tray 2 has been configured to use Legal paper. The default IPDS Tray# is 4 meaning that this input tray will be activated by selecting Source Drawer 00005 on the host.

Most IBM AFP/IPDS enabled hosts support selecting up to 255 input trays per device. It happens that the IPDS command for input tray selection uses the hex value corresponding to decimal 255 (hex 'FF') as part of the command syntax so that the numbers used to select the input trays at the IPDS command level are zero through 254. The system selections seen by human beings are one through 255 so the correlation between IPDSXpress IPDS Tray# and the Input Tray Selection in the host application is as follows:

Host System Application Input Tray Selection Number - one = IPDSXpress IPDS Tray#.

You are allowed to edit the IPDS Tray# field as necessary. The only illegal thing you can do is to map two different IPDSXpress input tray entries to the same IPDS tray#, which is a configuration error condition.